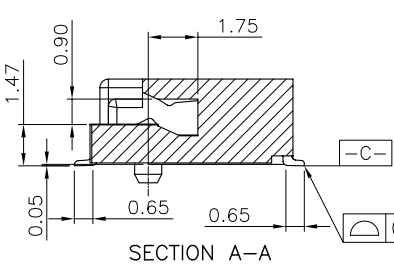
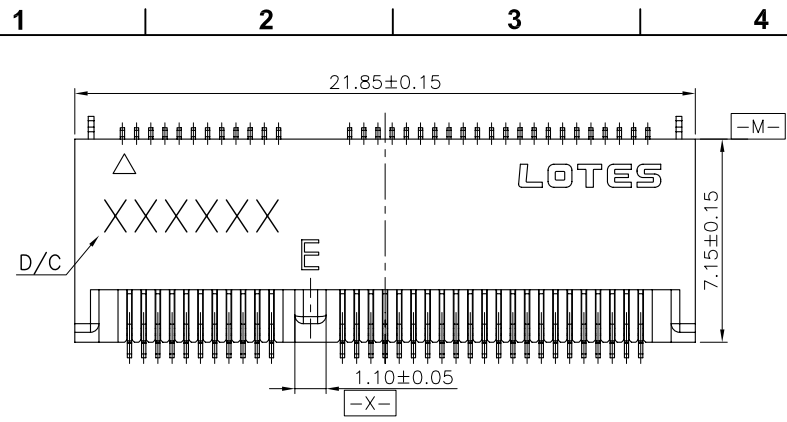
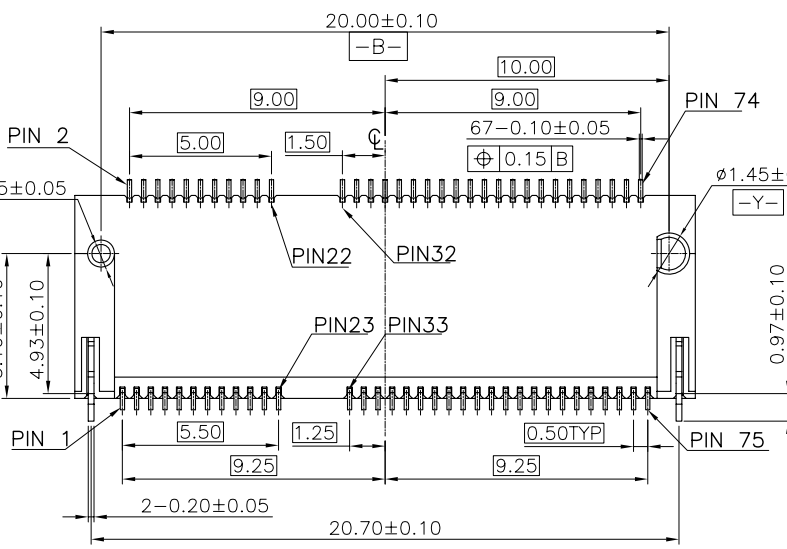
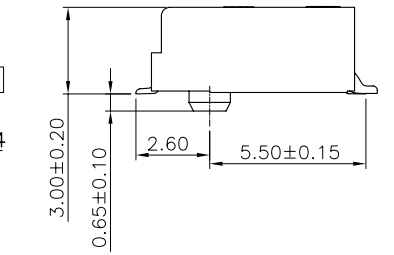
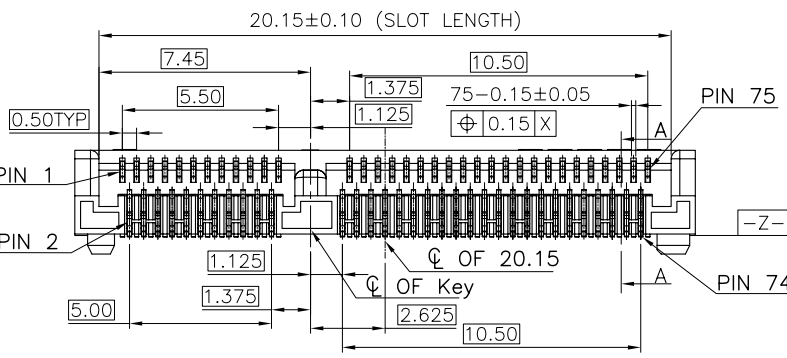


REV.	ECR/N NO./DESCRIPTION	DATE	DRAWN	CHECKED	APPROVE
1	SN14040	05/06'14	Jinjin.Tu	Vito	Barney



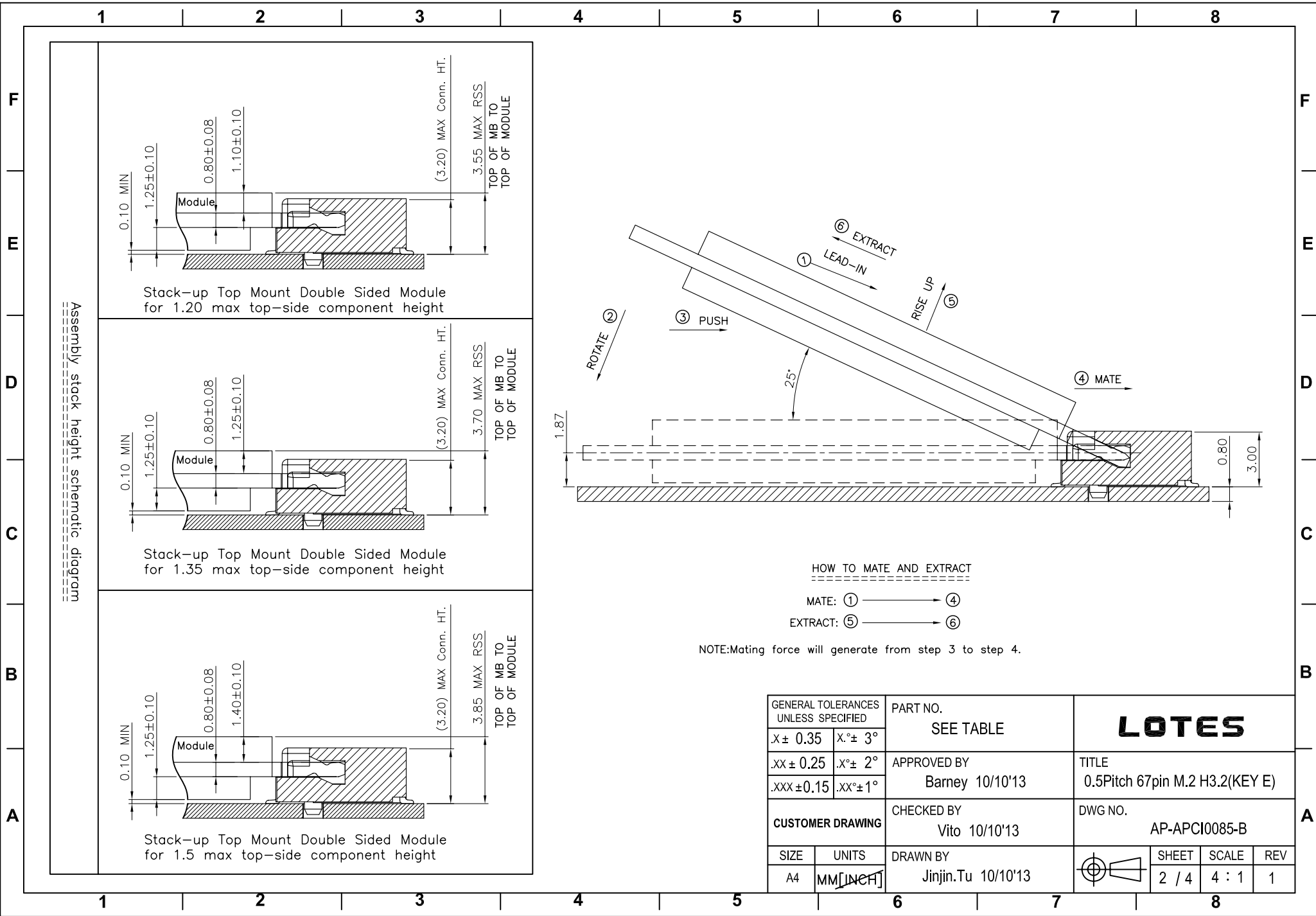
- NOTES:
- MATERIAL SPECIFICATION:
 - 1-1. HOUSING: LCP+40%GF, UL94V-0, COLOR: BLACK.
 - 1-2. CONTACT: COPPER ALLOY.
 - 1-3. SMT TAB: S50C.
 - PLATING SPECIFICATION:
 - 2-1. CONTACT: 50u" MIN. NICKEL UNDER PLATING OVER ALL. G/F PLATING ON SOLDER AREA. GOLD PLATING ON CONTACT AREA: SEE TABLE
 - 2-2. SMT TAB: 50u" MIN. NICKEL UNDER PLATING OVER ALL. 80u" MIN. MATTE TIN PLATING ON SOLDER AREA.
 - HF COMPLIANT, ROHS COMPLIANT.
 - DATE CODE: XXXXXX
 - DAY
 - WEEK
 - YEAR
 - MECHANICAL PERFORMANCE:
 - 5-1. DURABILITY: SEE TABLE
 - ELECTRICAL PERFORMANCE:
 - 6-1. CURRENT: 0.5A PER PIN.
 - 6-2. LLCR: INITIAL 55mΩ MAX. ; FINAL ΔLLCR=20mΩ MAX..
 - IR REFLOW: THE TEMPERATURE SHALL BE 260±5°C MAINTAINING 10±1 SECONDS.
 - PRODUCT NUMBER NOTE

A	P	C	I	X	X	X	X	X	X	X	X	X	X	X
												PACKING TYPE		
												PRODUCT SERIAL NUMBER		
												K:RoHS COMPLIANT/P:HF COMPLIANT		
												TYPE SERIAL NUMBER		
												PRODUCT TYPE		
												FINISHED PRODUCT		

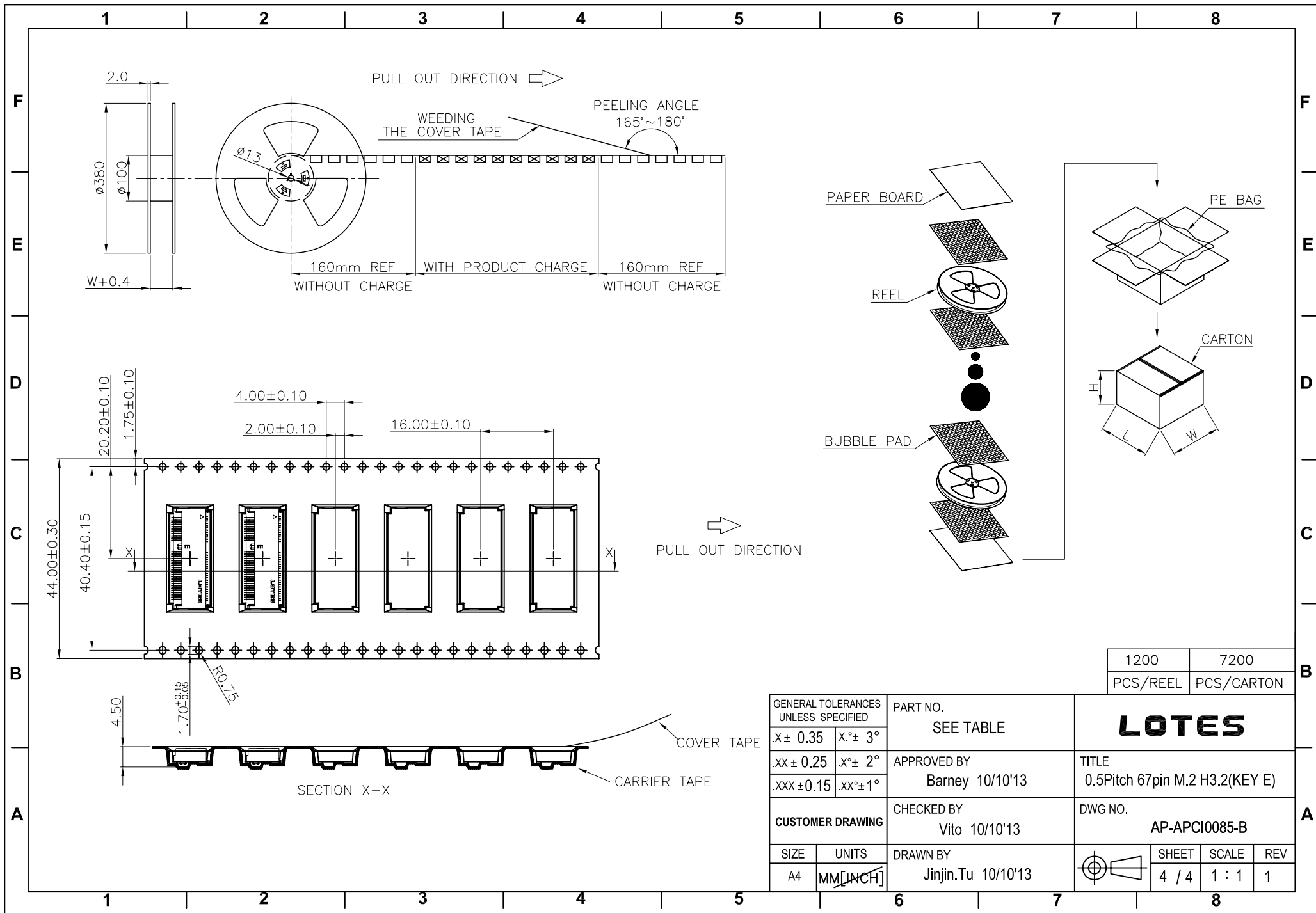


PART NO.	CONTACT PLATING	DURABILITY
APCI0085-P004A	30u" MIN. GOLD	60 CYCLES.
APCI0085-P005A	1~3u" MIN. GOLD	25 CYCLES.
APCI0085-P006A	10u" MIN. GOLD	25 CYCLES.
APCI0085-P007A	15u" MIN. GOLD	25 CYCLES.
APCI0085-P009A	5u" MIN. GOLD	25 CYCLES.

GENERAL TOLERANCES UNLESS SPECIFIED		PART NO. SEE TABLE	LOTES							
X± 0.35	X.°± 3°						APPROVED BY Barney 10/10'13	TITLE 0.5Pitch 67pin M.2 H3.2(KEY E)		
.XX ± 0.25	.X.° ± 2°							CHECKED BY Vito 10/10'13	DWG NO. AP-APCI0085-B	
.XXX ± 0.15	.XX.° ± 1°	CUSTOMER DRAWING	DRAWN BY Jinjin.Tu 10/10'13							
SIZE A4	UNITS MM [INCH]	DRAWN BY Jinjin.Tu 10/10'13		SHEET 1 / 4		SCALE 4 : 1	REV 1			



GENERAL TOLERANCES UNLESS SPECIFIED		PART NO. SEE TABLE	LOTES					
X ± 0.35	X.° ± 3°					APPROVED BY Barney 10/10'13	TITLE 0.5Pitch 67pin M.2 H3.2(KEY E)	
.XX ± 0.25	.X.° ± 2°		CHECKED BY Vito 10/10'13	DWG NO. AP-APCI0085-B				
.XXX ± 0.15	.XX.° ± 1°	CUSTOMER DRAWING	DRAWN BY Jinjin.Tu 10/10'13	SIZE A4	UNITS MM [INCH]	SHEET 2 / 4	SCALE 4 : 1	REV 1



1200	7200
PCS/REEL	PCS/CARTON

GENERAL TOLERANCES UNLESS SPECIFIED		PART NO. SEE TABLE	LOTES		
X ± 0.35	X° ± 3°				
.XX ± 0.25	.X° ± 2°	APPROVED BY Barney 10/10'13	TITLE 0.5Pitch 67pin M.2 H3.2(KEY E)		
.XXX ± 0.15	.XX° ± 1°	CHECKED BY Vito 10/10'13	DWG NO. AP-APCI0085-B		
CUSTOMER DRAWING		DRAWN BY Jinjin.Tu 10/10'13	SHEET 4 / 4	SCALE 1 : 1	REV 1
SIZE A4	UNITS MM [INCH]				